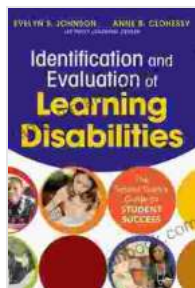


The School Team Guide to Student Success: A Comprehensive Framework for Collaboration



Identification and Evaluation of Learning Disabilities: The School Team's Guide to Student Success

by Evelyn S. Johnson

★★★★☆ 4 out of 5

Language : English
File size : 10133 KB
Text-to-Speech : Enabled
Screen Reader : Supported
Enhanced typesetting : Enabled
Word Wise : Enabled
Print length : 141 pages



Student success is a multifaceted goal that requires the concerted efforts of the entire school team. This guide provides a comprehensive framework for collaboration, data-driven decision-making, and positive school climate to create a supportive learning environment that empowers students to reach their full potential.

The Role of the School Team

The school team is a group of individuals who work together to support student learning. This team typically includes teachers, administrators, counselors, support staff, and parents.

The school team plays a vital role in student success by:

- Establishing clear academic goals and expectations
- Identifying students' strengths and areas for growth
- Developing and implementing effective instructional strategies
- Monitoring student progress and making data-driven decisions
- Creating a positive and supportive school climate
- Collaborating with parents and the community

Collaboration

Collaboration is essential for student success. The school team must work together to create a cohesive and supportive learning environment. This collaboration should occur at all levels, from the classroom to the school-wide level.

Some effective collaboration strategies include:

- Establishing a clear purpose and goals for collaboration
- Developing a shared vision for student success
- Creating a positive and respectful work environment
- Establishing regular communication channels
- Celebrating successes and learning from setbacks

Data-Driven Decision-Making

Data-driven decision-making is a process of using data to inform educational decisions. This data can come from a variety of sources, such as student assessments, attendance records, and surveys.

Data-driven decision-making can help the school team to:

- Identify areas of need
- Develop targeted interventions
- Monitor student progress
- Evaluate the effectiveness of educational programs

Positive School Climate

A positive school climate is essential for student success. This climate is characterized by:

- High expectations for all students
- A sense of belonging and community
- Respect for diversity
- Safe and supportive learning environments

Schools can create a positive school climate by:

- Establishing clear rules and expectations
- Providing opportunities for students to participate in decision-making
- Celebrating student successes
- Providing support services for students and families

Strategies for Student Success

In addition to collaboration, data-driven decision-making, and a positive school climate, there are a number of specific strategies that schools can implement to promote student success. These strategies include:

- Providing early intervention services for students who are struggling
- Offering differentiated instruction to meet the needs of all students
- Providing extra support for students from diverse backgrounds
- Creating a supportive and engaging learning environment
- Partnering with parents and the community

Monitoring and Evaluation

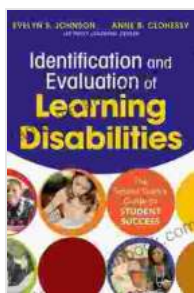
It is important to monitor and evaluate the effectiveness of the school team's efforts to promote student success. This can be done by:

- Tracking student progress data
- Conducting surveys of students, parents, and staff
- Observing classrooms and school activities

The school team should use this information to make adjustments to their strategies as needed.

Student success is a complex issue that requires the concerted efforts of the entire school team. By working together to create a collaborative, data-driven, and positive school climate, schools can empower students to reach their full potential.

Resource	Description	Link
National Center for Education Statistics	Provides data and statistics on education in the United States	https://nces.ed.gov/
National School Climate Center	Provides resources and support for creating positive school climates	https://www.schoolclimate.org/
National Association of Secondary School Principals	Provides resources and support for school leaders	https://www.nassp.org/
American Psychological Association	Provides resources and support for school psychologists	https://www.apa.org/
National Education Association	Provides resources and support for teachers and education professionals	https://www.nea.org/



Identification and Evaluation of Learning Disabilities: The School Team's Guide to Student Success

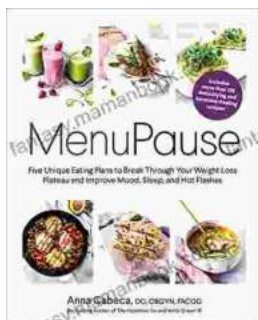
by Evelyn S. Johnson

★★★★☆ 4 out of 5

Language : English
 File size : 10133 KB
 Text-to-Speech : Enabled
 Screen Reader : Supported
 Enhanced typesetting : Enabled
 Word Wise : Enabled
 Print length : 141 pages

FREE

DOWNLOAD E-BOOK



Five Unique Eating Plans to Shatter Your Weight Loss Plateau and Unleash Your Potential

Weight loss journeys can be a rollercoaster of progress and setbacks. The initial excitement and motivation often fade as plateaus arise, leaving you feeling stuck and...



Sonata No. 1 for Flute and Piano: A Journey Through Musical Mastery

In the vast repertoire of classical music, Franz Danzi's Sonata No. 1 for Flute and Piano stands as a beacon of virtuosity and...