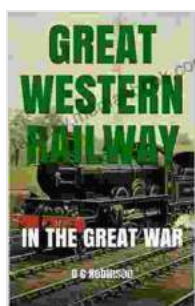


The Great Western Railway in the Great War: A Vital Lifeline for the British Empire

When the Great War broke out in 1914, the Great Western Railway (GWR) faced an unprecedented challenge. The British government relied heavily on the GWR to transport troops, munitions, and supplies to the front lines in France and Belgium. The railway company rose to the occasion, playing a critical role in the war effort and earning the nickname "the Iron Road to Victory."

Engineering Feats

The GWR's engineering prowess was evident throughout the war. The company quickly adapted its existing infrastructure and built new lines to meet the demands of the war effort. One of the most significant engineering feats was the construction of the Princetown Railway, a 16-mile line built in just six months to transport explosives from the Royal Navy's munitions factory in Devon to the port of Plymouth.



GREAT WESTERN RAILWAY: IN THE GREAT WAR

by D C Robinson

★★★★★ 5 out of 5

Language : English

File size : 9597 KB

Text-to-Speech : Enabled

Screen Reader : Supported

Enhanced typesetting : Enabled

Print length : 21 pages

FREE

DOWNLOAD E-BOOK



Another notable engineering achievement was the expansion of the GWR's locomotive fleet. The company purchased over 1,000 locomotives during the war, including the iconic "Star" class locomotives, which were designed to haul heavy freight trains at high speeds.



Transportation of Troops

The GWR transported over two million troops to the Western Front during the war. The railway company also played a vital role in transporting wounded soldiers back to Britain for medical treatment. The GWR's ambulance trains were specially designed to provide the best possible care for the injured.



Transportation of Munitions and Supplies

In addition to troops, the GWR also transported vast quantities of munitions and supplies to the front lines. The railway company's freight trains carried everything from artillery shells and machine guns to food, clothing, and medical supplies.



The GWR Workforce

The GWR's workforce played a vital role in the war effort. The railway company's employees worked tirelessly to keep the trains running, often under difficult and dangerous conditions. Many GWR employees served in the military, and some made the ultimate sacrifice for their country.



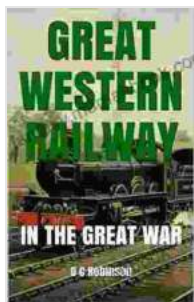
Legacy of the GWR

The Great Western Railway's contribution to the British war effort was immense. The railway company's engineering feats, transportation services, and dedicated workforce were essential to the victory on the Western Front.

The legacy of the GWR in the Great War lives on today. The Princetown Railway is still in operation, and the "Star" class locomotives are preserved in railway museums across the UK. The GWR's wartime achievements are a testament to the resilience, innovation, and dedication of the British people.

The Great Western Railway played a vital role in the British war effort during World War I. The railway company's engineering feats, transportation services, and dedicated workforce were essential to the victory on the Western Front.

The legacy of the GWR in the Great War is a reminder of the importance of transportation in times of conflict and the resilience of the British people in the face of adversity.



GREAT WESTERN RAILWAY: IN THE GREAT WAR

by D C Robinson

★★★★★ 5 out of 5

Language : English

File size : 9597 KB

Text-to-Speech : Enabled

Screen Reader : Supported

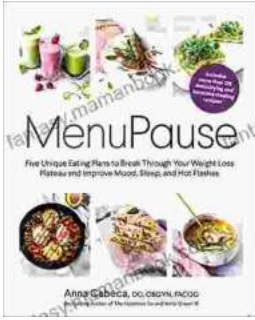
Enhanced typesetting : Enabled

Print length : 21 pages

FREE

DOWNLOAD E-BOOK





Five Unique Eating Plans to Shatter Your Weight Loss Plateau and Unleash Your Potential

Weight loss journeys can be a rollercoaster of progress and setbacks. The initial excitement and motivation often fade as plateaus arise, leaving you feeling stuck and...



Sonata No. 1 for Flute and Piano: A Journey Through Musical Mastery

In the vast repertoire of classical music, Franz Danzi's Sonata No. 1 for Flute and Piano stands as a beacon of virtuosity and...