

The Extraordinary Life and Legacy of Lurch Don McKay: A Canadian Icon



Lurch Don McKay, born Donald Eugene McKay, was a Canadian wrestling legend and actor who left an unforgettable mark on both the wrestling world and popular culture. With his towering stature, signature "Lurch" gimmick,

and remarkable acting skills, McKay became a beloved and iconic figure. This comprehensive article delves into the extraordinary life and legacy of "The Man Who Could Break a Man in Two."



Lurch by Don McKay

★★★★★ 5 out of 5

Language : English

File size : 1233 KB

Text-to-Speech : Enabled

Screen Reader : Supported

Enhanced typesetting : Enabled

Print length : 88 pages



Early Life and Career

Lurch Don McKay was born on July 10, 1927, in Winnipeg, Manitoba, Canada. Standing at a towering 6'8" and weighing over 400 pounds, McKay's impressive physique made him an almost inevitable choice for a career in the ring. However, his journey to professional wrestling took an unexpected turn.

In his early years, McKay worked as a lumberjack. It was during this time that he met Stuart Hart, a renowned Canadian wrestler and promoter. Impressed by McKay's strength and charisma, Hart suggested he try his hand at wrestling, and thus began his legendary career.

Rise to Prominence

McKay's wrestling career gained momentum in the 1950s. He wrestled throughout Canada and the United States, establishing himself as a

formidable opponent. In 1956, he made his debut in the National Wrestling Alliance (NWA), the largest wrestling organization of the time.

It was during this period that McKay developed his signature "Lurch" gimmick. Inspired by the iconic horror film character, McKay adopted a slow, deliberate style, complete with guttural moans and a brooding presence. The gimmick proved to be an instant hit with audiences, and Lurch Don became a fan favorite.

International Success

McKay's fame extended beyond North America. In the early 1960s, he wrestled in Japan for the All Japan Pro Wrestling (AJPW) promotion. There, he quickly became one of the most popular foreign wrestlers, known for his devastating power moves and imposing physique.

Hollywood Calling

McKay's popularity in the wrestling world caught the attention of Hollywood producers. In 1964, he made his acting debut in the horror-comedy film "Wild and Wonderful." His imposing presence and natural acting ability made an immediate impression, leading to numerous other film and television roles.

Perhaps his most famous acting role was as Lurch in the iconic 1964 TV series "The Addams Family." McKay's portrayal of the towering, mute butler perfectly captured the character's intimidating yet lovable personality. The role became synonymous with McKay's name and cemented his status as a pop culture icon.

Outside the Ring

Beyond wrestling and acting, McKay was also a successful businessman. He owned and operated several nightclubs and restaurants in Vancouver, British Columbia. He was also known for his charitable work, often donating his time and resources to local charities.

Later Years and Legacy

McKay retired from professional wrestling in the early 1970s. He continued to act occasionally, making guest appearances in several films and TV shows. In 1995, he was inducted into the Professional Wrestling Hall of Fame and Museum, recognizing his outstanding contributions to the sport.

Lurch Don McKay passed away on March 6, 2018, at the age of 90. His legacy as a wrestling legend and beloved actor continues to inspire generations of fans. He will forever be remembered as "The Man Who Could Break a Man in Two," a true icon of both the wrestling world and popular culture.

Impact on Canadian Wrestling

Lurch Don McKay played a pivotal role in the development of Canadian professional wrestling. His success in the NWA and AJPW helped to put Canadian wrestling on the international stage. He also inspired countless young wrestlers, including Bret Hart, who became one of the most successful wrestlers of all time.

Cultural Impact

McKay's contribution to popular culture extended far beyond his wrestling career. His portrayal of Lurch in "The Addams Family" made an indelible mark on television history. The character became an instantly recognizable symbol of the macabre, yet lovable, side of pop culture.

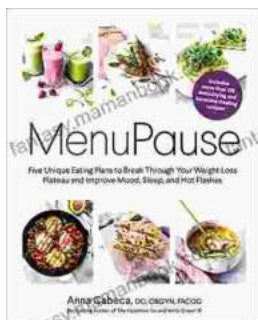
Lurch Don McKay was a true giant in the world of wrestling and entertainment. With his imposing physique, signature gimmick, and natural acting ability, he left an unforgettable impression on both the wrestling world and popular culture. His legacy as a legend and cultural icon continues to live on, inspiring generations of fans and reminding us of the enduring power of entertainment.



Lurch by Don McKay

★★★★★ 5 out of 5

- Language : English
- File size : 1233 KB
- Text-to-Speech : Enabled
- Screen Reader : Supported
- Enhanced typesetting : Enabled
- Print length : 88 pages



Five Unique Eating Plans to Shatter Your Weight Loss Plateau and Unleash Your Potential

Weight loss journeys can be a rollercoaster of progress and setbacks. The initial excitement and motivation often fade as plateaus arise, leaving you feeling stuck and...



Sonata No. 1 for Flute and Piano: A Journey Through Musical Mastery

In the vast repertoire of classical music, Franz Danzi's Sonata No. 1 for Flute and Piano stands as a beacon of virtuosity and...