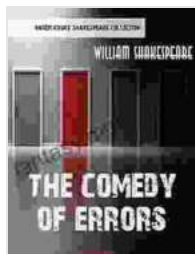


# The Comedy of Errors: A Masterpiece of Shakespearean Mishaps



## The Comedy of Errors (William Shakespeare Masterpieces Book 11) by Lilly Fröhlich

★★★★☆ 4.5 out of 5

Language : English  
File size : 423 KB  
Text-to-Speech : Enabled  
Screen Reader : Supported  
Enhanced typesetting : Enabled  
Word Wise : Enabled  
Print length : 89 pages



Prepare to embark on a literary journey filled with laughter, confusion, and mistaken identities as we delve into the enchanting world of William Shakespeare's *The Comedy of Errors*. This masterpiece of comedy is a whirlwind of misadventures that explores the complexities of love, marriage, and the nature of identity.

### Synopsis: A Tale of Identical Twins

The play revolves around two sets of identical twins, Antipholus of Syracuse and his servant Dromio of Syracuse, and their counterparts from Ephesus, Antipholus of Ephesus and his servant Dromio of Ephesus. Due to a shipwreck during their childhood, each set was separated, unaware of their twins' existence.

Years later, the Syracusan twins arrive in Ephesus, where their presence sets off a chain of comical misunderstandings. The citizens mistake them for their Ephesian counterparts, leading to confusion, chaos, and a series of hilarious mishaps.

### **Themes: Love, Identity, and Mischief**

Beneath the farcical façade, *The Comedy of Errors* explores profound themes that resonate across time:

- **Love:** The play's central love story revolves around Antipholus of Syracuse and Adriana, the wife of Antipholus of Ephesus. Their courtship is fraught with misunderstandings and mistaken identities, highlighting the complexities of love and desire.
- **Identity:** The question of identity is central to the play. The identical twins are constantly mistaken for one another, raising questions about the nature of selfhood and the fluidity of identity.
- **Mischief:** The play revels in slapstick humor and farcical situations. The characters are often victims of practical jokes and miscommunications, creating a sense of chaos and hilarity.

### **Characters: A Cast of Confusion**

The characters in *The Comedy of Errors* are a colorful and memorable cast:

- **Antipholus of Syracuse and Antipholus of Ephesus:** The two sets of twins, whose mistaken identities drive the plot. Each is entangled in a web of confusion and misadventures.

- **Dromio of Syracuse and Dromio of Ephesus:** The servants and sidekicks of their respective masters, they add to the chaos with their witty banter and slapstick antics.
- **Adriana:** The wife of Antipholus of Ephesus, she is torn between her love for her husband and her confusion over his changing behavior.
- **Luciana:** Adriana's sister, she provides a voice of reason and clarity amidst the chaos.
- **Egeon:** The father of the twins, who has spent years searching for his lost sons.

### **Style: A Shakespearean Comedy**

*The Comedy of Errors* showcases Shakespeare's mastery of comedic writing. The play is filled with witty dialogue, slapstick humor, and a fast-paced plot that keeps the audience engaged from beginning to end.

Shakespeare employs various literary devices to create comedic effects:

- **Mistaken Identities:** The core comic device of the play, leading to a series of misunderstandings and humorous situations.
- **Slapstick Humor:** The play is replete with physical comedy, such as pratfalls, beatings, and slapstick gags.
- **Verbal Comedy:** Shakespeare's clever wordplay, puns, and witty dialogue add to the comedic atmosphere.
- **Irony and Satire:** The play uses irony and satire to comment on human folly and society's tendency to judge based on appearances.

### **Critical Acclaim: A Timeless Classic**

*The Comedy of Errors* has been hailed as one of Shakespeare's greatest comedies. Its enduring popularity stems from its timeless themes, humorous characters, and clever use of language.

Critics have praised the play for its:

- **Theatrical Brilliance:** The play's fast-paced plot and slapstick humor make it a delight to watch on stage.
- **Universal Appeal:** The themes of love, identity, and confusion resonate with audiences across cultures and generations.
- **Literary Significance:** The play is considered a masterwork of comedic writing, showcasing Shakespeare's genius.

## **Adaptations and Legacy**

*The Comedy of Errors* has been adapted into numerous films, television shows, and theatrical productions. Notable adaptations include:

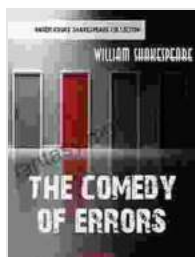
- 1914 Silent film starring Charlie Chaplin
- 1983 BBC Television production
- 2002 Broadway revival starring Nathan Lane

The play's influence extends beyond its own productions. Its themes and characters have been referenced and reimagined in countless works of art, literature, and popular culture.

## **: A Farcical Delight**

*The Comedy of Errors* is a timeless masterpiece of comedic theater. Its zany characters, mistaken identities, and witty dialogue have delighted audiences for centuries. Through its exploration of love, identity, and the human condition, the play continues to entertain and challenge readers and viewers alike.

Whether you encounter it on stage or in print, *The Comedy of Errors* is a must-read for anyone who appreciates the brilliance of Shakespearean comedy. Its infectious humor and enduring themes will leave you laughing, pondering, and appreciating the complexity of human existence.

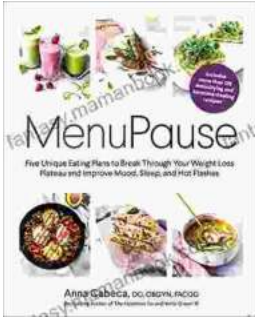


## The Comedy of Errors (William Shakespeare Masterpieces Book 11) by Lilly Fröhlich

★ ★ ★ ★ ☆ 4.5 out of 5

Language : English  
File size : 423 KB  
Text-to-Speech : Enabled  
Screen Reader : Supported  
Enhanced typesetting : Enabled  
Word Wise : Enabled  
Print length : 89 pages





## Five Unique Eating Plans to Shatter Your Weight Loss Plateau and Unleash Your Potential

Weight loss journeys can be a rollercoaster of progress and setbacks. The initial excitement and motivation often fade as plateaus arise, leaving you feeling stuck and...



## Sonata No. 1 for Flute and Piano: A Journey Through Musical Mastery

In the vast repertoire of classical music, Franz Danzi's Sonata No. 1 for Flute and Piano stands as a beacon of virtuosity and...