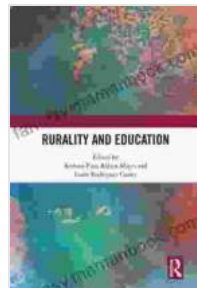


# Rurality and Education: Exploring the Complex Intersections



## Rurality and Education by Kate Ellis

★★★★☆ 4.1 out of 5

Language : English

File size : 2747 KB

Text-to-Speech : Enabled

Screen Reader : Supported

Enhanced typesetting : Enabled

Word Wise : Enabled

Print length : 152 pages



The relationship between rurality and education is complex and multifaceted, with both unique challenges and opportunities. Rural students and educators face a range of issues that their urban counterparts do not. These include limited access to quality education, challenges in teacher recruitment and retention, and the impact of socioeconomic factors on educational outcomes.

## Access to Quality Education

One of the most significant challenges facing rural students is access to quality education. Rural schools often have fewer resources than urban schools, and they may be located far from students' homes. This can make it difficult for students to attend school regularly and to participate in extracurricular activities.

In addition, rural schools often have larger class sizes and fewer teachers than urban schools. This can make it difficult for students to get the individualized attention they need. Rural schools also tend to have lower graduation rates than urban schools.

## **Teacher Recruitment and Retention**

Another challenge facing rural education is teacher recruitment and retention. Rural schools often have difficulty attracting and retaining qualified teachers. This is due to a number of factors, including the lower salaries and benefits offered by rural schools, the lack of affordable housing in rural areas, and the isolation of rural communities.

The shortage of qualified teachers in rural areas can have a negative impact on student learning. Studies have shown that students who are taught by inexperienced or underqualified teachers are more likely to fall behind in their studies.

## **Socioeconomic Factors**

Socioeconomic factors also play a significant role in educational outcomes in rural areas. Rural communities tend to have higher poverty rates than urban communities, and this can have a negative impact on students' ability to succeed in school.

Students who live in poverty are more likely to be food insecure, homeless, and to have health problems. These factors can make it difficult for students to focus on their studies and to succeed in school.

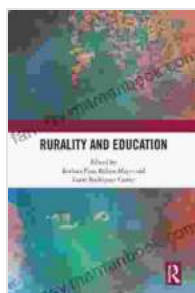
The relationship between rurality and education is complex and multifaceted. Rural students and educators face a range of challenges that their urban counterparts do not. These challenges include limited access to quality education, difficulties in teacher recruitment and retention, and the impact of socioeconomic factors on educational outcomes.

Despite these challenges, rural students and educators are making progress. Rural schools are increasingly implementing innovative programs and practices to improve student learning. And, rural communities are working together to support their schools and to create a brighter future for their children.

## Call to Action

If you are interested in supporting rural education, there are a number of things you can do. You can donate to organizations that support rural schools, volunteer your time at a rural school, or advocate for policies that support rural education.

By working together, we can ensure that all students, regardless of where they live, have access to a quality education.



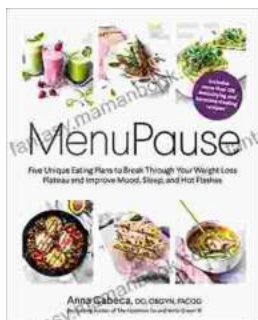
### **Rurality and Education** by Kate Ellis

★★★★☆ 4.1 out of 5

Language	: English
File size	: 2747 KB
Text-to-Speech	: Enabled
Screen Reader	: Supported
Enhanced typesetting	: Enabled
Word Wise	: Enabled
Print length	: 152 pages

FREE

DOWNLOAD E-BOOK



## Five Unique Eating Plans to Shatter Your Weight Loss Plateau and Unleash Your Potential

Weight loss journeys can be a rollercoaster of progress and setbacks. The initial excitement and motivation often fade as plateaus arise, leaving you feeling stuck and...



## Sonata No. 1 for Flute and Piano: A Journey Through Musical Mastery

In the vast repertoire of classical music, Franz Danzi's Sonata No. 1 for Flute and Piano stands as a beacon of virtuosity and...