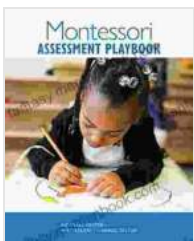


# Montessori Assessment Playbook: A Comprehensive Guide to Montessori Assessment in the Public Sector

The Montessori Assessment Playbook is a comprehensive guide to Montessori assessment in the public sector. It provides guidance on how to develop and implement Montessori-aligned assessments, as well as how to use assessment data to improve instruction and support student learning.

This playbook is designed to be a resource for educators, administrators, and policymakers who are interested in using Montessori assessment to improve the quality of education for all students.

Montessori assessment is a holistic approach to assessment that is based on the principles of Montessori education. Montessori assessment focuses on the individual child and their unique learning needs. It is designed to provide teachers with information about the child's strengths and weaknesses, so that they can tailor instruction to meet the child's individual needs.



## Montessori Assessment Playbook (National Center for Montessori in the Public Sector Playbooks)

by National Center for Montessori in the Public Sector

★★★★☆ 4.7 out of 5

Language : English

File size : 4940 KB

Screen Reader: Supported

Print length : 152 pages

Lending : Enabled



Montessori assessment is based on the following principles:

- **Observation:** Montessori teachers observe children carefully to gather information about their development.
- **Documentation:** Montessori teachers document their observations to create a record of the child's progress.
- **Individualization:** Montessori assessment is individualized to meet the unique needs of each child.
- **Collaboration:** Montessori teachers collaborate with parents and other professionals to develop and implement assessment plans.

Developing Montessori-aligned assessments can be a challenging task. However, there are a number of resources available to help educators develop assessments that are valid, reliable, and fair.

The following steps can be used to develop Montessori-aligned assessments:

1. **Identify the purpose of the assessment.** What information do you need to gather about the child?
2. **Choose the appropriate assessment method.** There are a variety of assessment methods that can be used in Montessori classrooms, such as observation, documentation, and portfolios.
3. **Develop the assessment criteria.** The assessment criteria should be based on the Montessori principles of observation, documentation, and

individualization.

4. **Field test the assessment.** Once the assessment has been developed, it should be field tested to ensure that it is valid, reliable, and fair.

Once Montessori-aligned assessments have been developed, they need to be implemented in a way that is effective and efficient. The following steps can be used to implement Montessori-aligned assessments:

1. **Train teachers on how to use the assessments.** Teachers need to be trained on how to use the assessments correctly and how to interpret the results.
2. **Provide students with opportunities to practice with the assessments.** Students need to be given opportunities to practice with the assessments so that they can become familiar with the format and the expectations.
3. **Use the assessment data to improve instruction.** The assessment data can be used to identify areas where students need additional support.
4. **Collaborate with parents and other professionals.** Montessori teachers should collaborate with parents and other professionals to develop and implement assessment plans.

Assessment data can be used to improve instruction and support student learning in a variety of ways. The following are some examples of how assessment data can be used to improve instruction:

- **Identify areas where students need additional support.**

Assessment data can be used to identify areas where students need additional support. This information can be used to develop targeted interventions that will help students improve their skills.

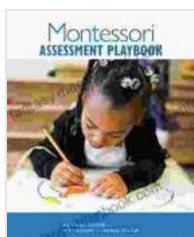
- **Adjust instruction to meet the needs of individual students.**

Assessment data can be used to adjust instruction to meet the needs of individual students. This information can be used to develop individualized learning plans that will help students achieve their full potential.

- **Track student progress over time.** Assessment data can be used to track student progress over time. This information can be used to assess the effectiveness of instruction and to make adjustments as needed.

The Montessori Assessment Playbook is a comprehensive guide to Montessori assessment in the public sector. It provides guidance on how to develop and implement Montessori-aligned assessments, as well as how to use assessment data to improve instruction and support student learning.

This playbook is a valuable resource for educators, administrators, and policymakers who are interested in using Montessori assessment to improve the quality of education for all students.



## Montessori Assessment Playbook (National Center for Montessori in the Public Sector Playbooks)

by National Center for Montessori in the Public Sector

★★★★☆ 4.7 out of 5

Language : English

File size : 4940 KB

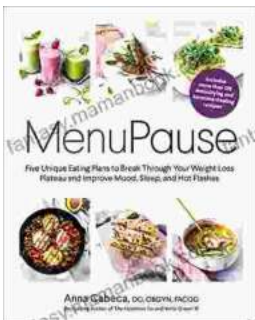
Screen Reader : Supported

Print length : 152 pages

Lending : Enabled

FREE

DOWNLOAD E-BOOK



## Five Unique Eating Plans to Shatter Your Weight Loss Plateau and Unleash Your Potential

Weight loss journeys can be a rollercoaster of progress and setbacks. The initial excitement and motivation often fade as plateaus arise, leaving you feeling stuck and...



## Sonata No. 1 for Flute and Piano: A Journey Through Musical Mastery

In the vast repertoire of classical music, Franz Danzi's Sonata No. 1 for Flute and Piano stands as a beacon of virtuosity and...