

Men's Shifio Patterns: A Decade of Evolution (1991-2001)

Shifio patterns emerged in the 1990s as a distinctive element of menswear, adding intricate detail and visual interest to garments. This comprehensive guide provides an in-depth exploration of Men's Shifio Patterns from 1991 to 2001, tracing their evolution through detailed descriptions, visual examples, and contextual insights.



X-Men (1991-2001) #112 by ShiFio's Patterns

★★★★☆ 4.2 out of 5

Language : English

File size : 86260 KB

Screen Reader: Supported

Print length : 20 pages



Historical Context

The 1990s witnessed a shift in menswear towards experimentation and playfulness. Designers challenged traditional norms by introducing bold colors, unconventional silhouettes, and innovative patterns. Shifio patterns became a key part of this fashion revolution, adding a touch of sophistication and artistry to menswear.

Pattern Analysis

1991-1993: Early Beginnings



During the early years of the decade, Shifio patterns were characterized by abstract geometric designs. These patterns often featured sharp angles, bold lines, and contrasting colors, contributing to a futuristic and experimental aesthetic.

1994-1996: Floral and Paisley Influences



In the mid-1990s, floral and paisley motifs gained popularity in Shifio patterns. These patterns exuded a more romantic and bohemian vibe, often incorporating vibrant colors and intricate details.

1997-1999: Abstract Expressionism



Shifio patterns during this period drew inspiration from Abstract Expressionism. They featured gestural brushstrokes, color blocks, and overlapping shapes, creating a dynamic and expressive effect.

2000-2001: Minimalism and Eastern Influences



As the decade drew to a close, Shifio patterns underwent a shift towards minimalism. Clean lines, simple geometric shapes, and muted colors dominated, reflecting the influence of Eastern aesthetics.

Designers and Brands

Several prominent designers and brands contributed to the rise of Men's Shifio Patterns in the 1990s and 2000s.

- Comme des Garçons: Known for bold and avant-garde designs, Comme des Garçons played a crucial role in popularizing Shifio patterns.

- Yohji Yamamoto: Yamamoto's deconstructed and layered garments often featured intricate Shifio patterns, adding a touch of elegance and depth to his creations.
- Raf Simons: Simons' innovative approach to menswear incorporated Shifio patterns as a signature element, creating visually striking and unforgettable garments.

Impact on Menswear

Men's Shifio Patterns had a significant impact on menswear during this period. They transformed traditional garments such as suits, shirts, and ties, injecting them with a fresh and contemporary appeal. Shifio patterns also influenced the rise of streetwear, adding a sophisticated touch to casual attire.

Men's Shifio Patterns from 1991 to 2001 represented a decade of fashion innovation and experimentation. They evolved from abstract geometric designs to floral and paisley motifs, abstract expressionism, and finally minimalism and Eastern influences. Prominent designers such as Comme des Garçons, Yohji Yamamoto, and Raf Simons played a key role in their popularization. Shifio patterns left an indelible mark on menswear, adding a touch of sophistication, creativity, and visual interest that continues to resonate today.



X-Men (1991-2001) #112 by ShiFio's Patterns

★★★★☆ 4.2 out of 5

Language : English

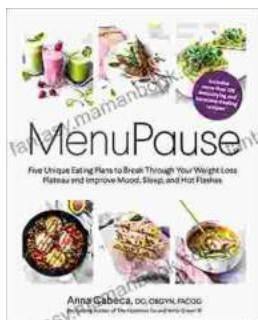
File size : 86260 KB

Screen Reader : Supported

Print length : 20 pages

FREE

DOWNLOAD E-BOOK



Five Unique Eating Plans to Shatter Your Weight Loss Plateau and Unleash Your Potential

Weight loss journeys can be a rollercoaster of progress and setbacks. The initial excitement and motivation often fade as plateaus arise, leaving you feeling stuck and...



Sonata No. 1 for Flute and Piano: A Journey Through Musical Mastery

In the vast repertoire of classical music, Franz Danzi's Sonata No. 1 for Flute and Piano stands as a beacon of virtuosity and...