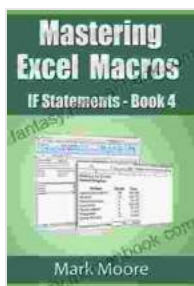


Mastering Excel Macros: If Statements Made Easy

Excel macros are powerful tools that can automate repetitive tasks and enhance your productivity. If statements are a fundamental part of macro programming, allowing you to control the flow of your code based on specific conditions. This guide will provide a comprehensive overview of Excel macros if statements, from basic syntax to advanced techniques. By mastering this essential skill, you'll unlock the full potential of Excel macros and streamline your workflow.

An if statement in Excel VBA follows the following syntax:

```
vba If condition Then ' Code to execute if condition is true Else ' Code to execute if condition is false End If
```



Mastering Excel Macros - IF Statements (Book 4)

by Mark Moore

★★★★☆ 4.5 out of 5

Language : English

File size : 193 KB

Text-to-Speech : Enabled

Screen Reader : Supported

Enhanced typesetting : Enabled

Print length : 19 pages

Lending : Enabled



The condition can be any expression that evaluates to either TRUE or FALSE. If the condition is true, the code block following the Then keyword will be executed. Otherwise, the code block following the Else keyword will be executed.

```
vba If Range("A1").Value > 100 Then MsgBox "Value in A1 is greater than 100" Else MsgBox "Value in A1 is less than or equal to 100" End If
```

In this example, if the value in cell A1 is greater than 100, a message box will be displayed with the text "Value in A1 is greater than 100". If the value in A1 is less than or equal to 100, the message box will display the text "Value in A1 is less than or equal to 100".

Logical operators allow you to combine multiple conditions in an if statement. The most common logical operators are:

- **And:** Both conditions must be true for the statement to be true.
- **Or:** Either condition can be true for the statement to be true.
- **Not:** Reverses the truth value of the condition.

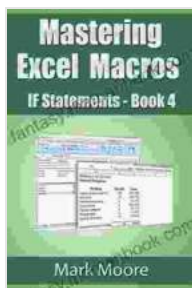
```
vba If Range("A1").Value > 100 And Range("B1").Value > 200 Then MsgBox "Both values are greater than 100 and 200" Else MsgBox "At least one value is not greater than 100 or 200" End If
```

In this example, both conditions must be true for the message box to display the text "Both values are greater than 100 and 200". If either condition is false, the message box will display the text "At least one value is not greater than 100 or 200".

Nested if statements allow you to create more complex conditional statements. A nested if statement is an if statement that is contained within another if statement. This allows you to check multiple conditions in a single statement.

```
vba If Range("A1").Value > 100 Then MsgBox "Value in A1 is greater than 100" If Range("B1").Value > 200 Then MsgBox "Value in B1 is also greater than 200" End If Else MsgBox "Value in A1 is less than or equal to 100" End If
```

In this example, if the value in cell A1 is greater than 100, the me



Mastering Excel Macros - IF Statements (Book 4)

by Mark Moore

★★★★☆ 4.5 out of 5

Language : English

File size : 193 KB

Text-to-Speech : Enabled

Screen Reader : Supported

Enhanced typesetting: Enabled

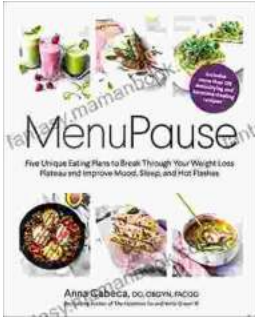
Print length : 19 pages

Lending : Enabled

FREE

DOWNLOAD E-BOOK





Five Unique Eating Plans to Shatter Your Weight Loss Plateau and Unleash Your Potential

Weight loss journeys can be a rollercoaster of progress and setbacks. The initial excitement and motivation often fade as plateaus arise, leaving you feeling stuck and...



Sonata No. 1 for Flute and Piano: A Journey Through Musical Mastery

In the vast repertoire of classical music, Franz Danzi's Sonata No. 1 for Flute and Piano stands as a beacon of virtuosity and...