

Knitting Pattern Kp239 Owl Cushion Cover Or Pyjama Case Uk Terminology

This adorable Owl Cushion Cover or Pyjama Case is a great way to add a touch of fun and whimsy to your home décor or sleepwear. The pattern is easy to follow, even for beginners, and the finished product is sure to be a hit with everyone who sees it.

Materials

- One 100g ball of DK yarn in main colour
- One 50g ball of DK yarn in contrast colour
- One pair of 4mm knitting needles
- One tapestry needle
- Toy stuffing

Tension

22 stitches and 30 rows to 10cm/4in over stocking stitch using 4mm needles.



Knitting Pattern - KP239 - Owl cushion cover or pyjama case - UK terminology by ShiFio's Patterns

★★★★☆ 4.8 out of 5

Language : English
File size : 1340 KB
Text-to-Speech : Enabled
Screen Reader : Supported
Enhanced typesetting : Enabled
Print length : 10 pages
Lending : Enabled

FREE

DOWNLOAD E-BOOK



Abbreviations

- K – knit
- P – purl
- St(s) – stitch(es)
- Inc – increase
- Dec – decrease
- Rep – repeat
- Sl st – slip stitch
- SSK – slip 1, slip 1, knit 2 together through the back loops
- K2tog – knit 2 together
- P2tog – purl 2 together

Pattern

Cushion Cover:

1. Cast on 50 stitches in main colour.
2. Work in stocking stitch (knit 1 row, purl 1 row) for 10cm/4in.
3. Change to contrast colour and work in stocking stitch for 5cm/2in.
4. Change back to main colour and work in stocking stitch for 10cm/4in.
5. Cast off all stitches.

Pyjama Case:

1. Cast on 60 stitches in main colour.
2. Work in stocking stitch (knit 1 row, purl 1 row) for 15cm/6in.
3. Change to contrast colour and work in stocking stitch for 5cm/2in.
4. Change back to main colour and work in stocking stitch for 15cm/6in.
5. Cast off all stitches.

To Make Up

1. Sew the two pieces together, leaving an opening for the stuffing.
2. Turn right side out and stuff with toy stuffing.
3. Sew up the opening.

Variations

You can customise your owl cushion cover or pyjama case by changing the colours or adding embellishments. For example, you could add a beak to the owl by stitching on a felt triangle in a contrasting colour. You could also add eyes by stitching on two black buttons or beads.

This Owl Cushion Cover or Pyjama Case is a fun and easy way to add a touch of personality to your home décor or sleepwear. The pattern is easy to follow, even for beginners, and the finished product is sure to be a hit with everyone who sees it.

So what are you waiting for? Get started on your own Owl Cushion Cover or Pyjama Case today!

Image Gallery





Owl Cushion Cover





Owl Pyjama Case





Owl Pyjama Case



Knitting Pattern - KP239 - Owl cushion cover or pyjama case - UK terminology by ShiFio's Patterns

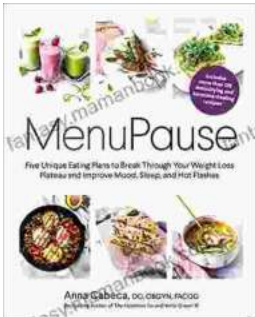
★★★★☆ 4.8 out of 5

Language : English

File size : 1340 KB

Text-to-Speech : Enabled

Screen Reader : Supported
Enhanced typesetting: Enabled
Print length : 10 pages
Lending : Enabled



Five Unique Eating Plans to Shatter Your Weight Loss Plateau and Unleash Your Potential

Weight loss journeys can be a rollercoaster of progress and setbacks. The initial excitement and motivation often fade as plateaus arise, leaving you feeling stuck and...



Sonata No. 1 for Flute and Piano: A Journey Through Musical Mastery

In the vast repertoire of classical music, Franz Danzi's Sonata No. 1 for Flute and Piano stands as a beacon of virtuosity and...