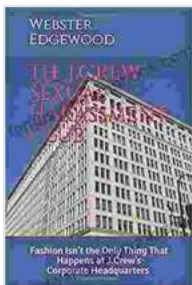


Fashion Isn't the Only Thing That Happens at Crew Corporate Headquarters

Nestled in the heart of Columbus, Ohio, the headquarters of Crew Clothing Company is a bustling hub that exudes both sophistication and a welcoming ambiance. While renowned for its stylish apparel, the company's culture goes far beyond the realm of fashion. A deep-seated commitment to employee well-being, a vibrant work environment, and a steadfast dedication to community involvement define the very essence of Crew Corporate Headquarters.



The J.Crew Sexual Harassment Club: Fashion Isn't the Only Thing That Happens at J.Crew's Corporate Headquarters by Webster Edgewood

★★★★★ 5 out of 5

| | |
|----------------------|-------------|
| Language | : English |
| File size | : 419 KB |
| Text-to-Speech | : Enabled |
| Screen Reader | : Supported |
| Enhanced typesetting | : Enabled |
| Word Wise | : Enabled |
| Print length | : 103 pages |
| Lending | : Enabled |



A Culture that Fosters Growth and Innovation

Stepping into Crew's corporate headquarters is akin to entering a world where creativity and collaboration thrive. The company's philosophy,

centered around empowering its employees, manifests in a work environment that encourages professional growth and innovation. A diverse team of passionate individuals from a multitude of backgrounds brings a wealth of perspectives and expertise to the table, fostering a workplace where ideas are valued and innovation is celebrated.

Crew's commitment to employee development is evident in its comprehensive training and mentoring programs. Employees are provided with opportunities to hone their skills, expand their knowledge base, and advance their careers. The company's belief in the potential of its workforce extends beyond traditional training methods. Crew recognizes the importance of work-life integration and offers flexible work arrangements, enabling employees to maintain a healthy balance between their professional and personal lives.

Employee Well-being: A Top Priority

At Crew Corporate Headquarters, employee well-being is not merely an afterthought but a fundamental pillar of the company's ethos. The company firmly believes that a healthy and happy workforce translates into a productive and engaged workplace. To this end, Crew invests heavily in initiatives that promote the physical, mental, and emotional well-being of its employees.

The on-site fitness center, complete with state-of-the-art equipment and group fitness classes, encourages employees to prioritize their physical health. The company also fosters a culture of healthy eating by providing nutritious meal options in the cafeteria and hosting regular wellness workshops. Crew's commitment to employee well-being extends beyond the physical realm, with a comprehensive health insurance plan and access

to counseling and support services ensuring that employees' mental health is equally valued.

Giving Back to the Community

Crew Corporate Headquarters is deeply rooted in the Columbus community, and the company is unwavering in its commitment to giving back. Crew believes that businesses have a responsibility to support the communities in which they operate, and it actively seeks opportunities to make a positive impact.

Through its charitable giving program, Crew provides financial support to various organizations that align with its core values. The company also encourages employee volunteerism, offering paid time off for employees to participate in community service projects. Crew has partnered with numerous local non-profits, including food banks, homeless shelters, and youth education programs, making a tangible difference in the lives of those in need.

A Workplace that Inspires

Crew Corporate Headquarters is not merely a place of work; it is a vibrant and dynamic environment that inspires creativity and innovation. The company's commitment to its employees, its dedication to their well-being, and its unwavering involvement in the community create a workplace that is truly extraordinary.

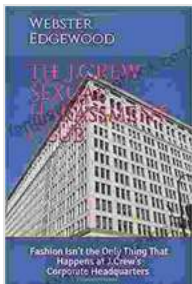
As Crew continues to grow and expand, the company remains steadfast in its commitment to fostering a work environment that values diversity, inclusivity, and personal growth. Crew Corporate Headquarters stands as a

shining example of how a fashion company can extend beyond its products to create a workplace that is both stylish and substance.

Image Gallery







The J.Crew Sexual Harassment Club: Fashion Isn't the Only Thing That Happens at J.Crew's Corporate Headquarters

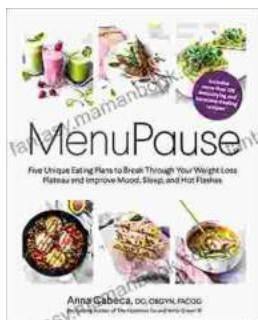
by Webster Edgewood

★★★★★ 5 out of 5

Language : English
File size : 419 KB
Text-to-Speech : Enabled
Screen Reader : Supported
Enhanced typesetting : Enabled
Word Wise : Enabled
Print length : 103 pages
Lending : Enabled

FREE

DOWNLOAD E-BOOK



Five Unique Eating Plans to Shatter Your Weight Loss Plateau and Unleash Your Potential

Weight loss journeys can be a rollercoaster of progress and setbacks. The initial excitement and motivation often fade as plateaus arise, leaving you feeling stuck and...



Sonata No. 1 for Flute and Piano: A Journey Through Musical Mastery

In the vast repertoire of classical music, Franz Danzi's Sonata No. 1 for Flute and Piano stands as a beacon of virtuosity and...