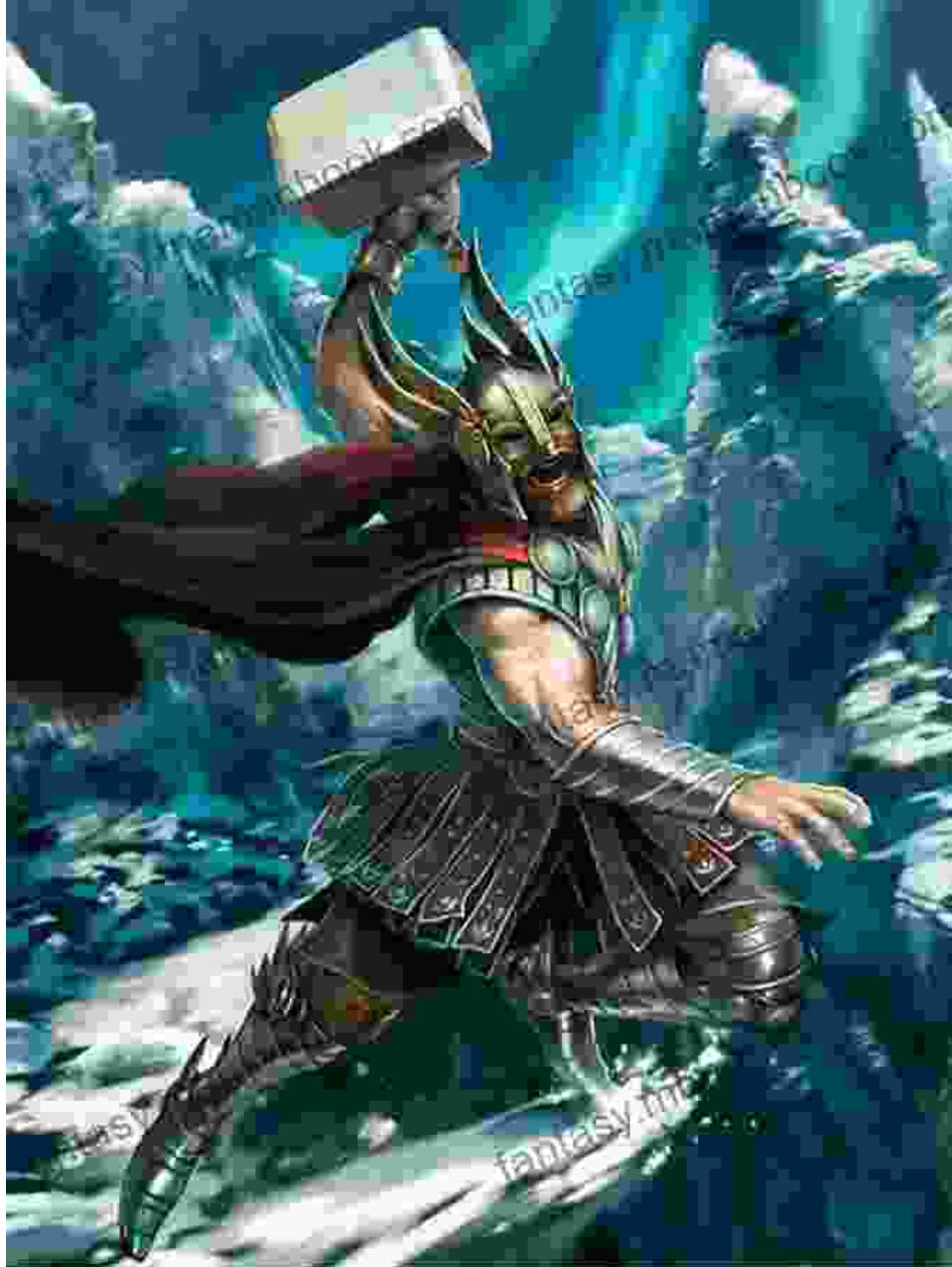


Assigned Thor Dragon Rider: A Guide to the Mythical Creature and Its Rider



The dragon, a mythical creature that has captured human imagination for centuries, is often depicted as a powerful and majestic beast. In many cultures, dragons are associated with strength, wisdom, and magic. In

Norse mythology, the dragon is particularly significant as the steed of the mighty god Thor.

The Dragon in Norse Mythology

In Norse mythology, dragons are known as "ormr" or "dreki." They are depicted as massive, serpentine creatures with scales, claws, and wings. Dragons are said to possess immense strength and intelligence, and they are often associated with the underworld and hidden treasures.



Assigned: Book 7 (Thor's Dragon Rider) by Katrina Cope

★★★★☆ 4.4 out of 5

Language : English
File size : 3603 KB
Text-to-Speech : Enabled
Enhanced typesetting : Enabled
Word Wise : Enabled
Lending : Enabled
Screen Reader : Supported
Print length : 206 pages
X-Ray for textbooks : Enabled



The most famous dragon in Norse mythology is Nidhogg, a venomous serpent that gnaws at the roots of the world tree Yggdrasil. Other notable dragons include Fafnir, a dragon who transformed into a human form to guard a treasure horde, and Jormungandr, a giant serpent that encircles the world and bites its own tail.

Thor, the God of Thunder

Thor, the Norse god of thunder, is one of the most powerful and popular gods in the Norse pantheon. He is known for his strength, courage, and his magical hammer, Mjolnir. Thor is also associated with thunder, lightning, and storms.

In Norse mythology, Thor is often depicted riding on a chariot pulled by two goats, Tanngrisnir and Tanngrjóstr. However, in some stories, Thor is also said to ride on a dragon.

Assigned Thor Dragon Rider

The Assigned Thor Dragon Rider is a relatively obscure figure in Norse mythology. There is only one known reference to this figure, which appears in the Poetic Edda, a collection of Old Norse poems.

In the poem "Pórsdrápa," the skald Eilífr Goðrúnarson describes Thor as "the rider of the dragon." This is the only known instance where Thor is explicitly associated with a dragon mount.

It is unclear why Thor is depicted as riding on a dragon in this poem. Some scholars believe that the dragon may represent Thor's strength and power. Others suggest that the dragon may be a symbol of Thor's connection to the underworld.

The Significance of the Assigned Thor Dragon Rider

The Assigned Thor Dragon Rider is a fascinating figure that provides a glimpse into the complex mythology of the Norse people. This figure represents the power and majesty of Thor, as well as the close relationship between the gods and the mythical creatures of the natural world.

The Assigned Thor Dragon Rider also serves as a reminder of the importance of dragons in Norse culture. Dragons were seen as powerful and respected creatures, and they were often associated with wisdom, strength, and magic.

The Assigned Thor Dragon Rider is a unique and enigmatic figure in Norse mythology. This figure represents the power and majesty of Thor, as well as the close relationship between the gods and the mythical creatures of the natural world. The Assigned Thor Dragon Rider is also a reminder of the importance of dragons in Norse culture, where they were seen as powerful and respected creatures.

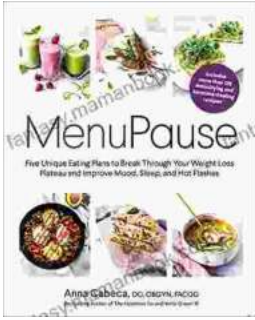


Assigned: Book 7 (Thor's Dragon Rider) by Katrina Cope

★★★★☆ 4.4 out of 5

- Language : English
- File size : 3603 KB
- Text-to-Speech : Enabled
- Enhanced typesetting : Enabled
- Word Wise : Enabled
- Lending : Enabled
- Screen Reader : Supported
- Print length : 206 pages
- X-Ray for textbooks : Enabled





Five Unique Eating Plans to Shatter Your Weight Loss Plateau and Unleash Your Potential

Weight loss journeys can be a rollercoaster of progress and setbacks. The initial excitement and motivation often fade as plateaus arise, leaving you feeling stuck and...



Sonata No. 1 for Flute and Piano: A Journey Through Musical Mastery

In the vast repertoire of classical music, Franz Danzi's Sonata No. 1 for Flute and Piano stands as a beacon of virtuosity and...